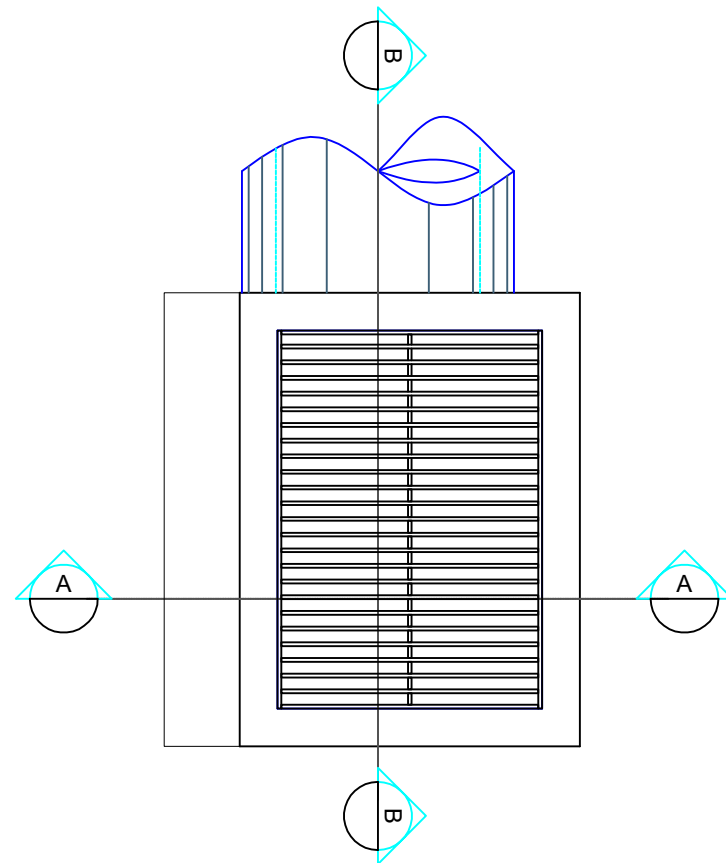
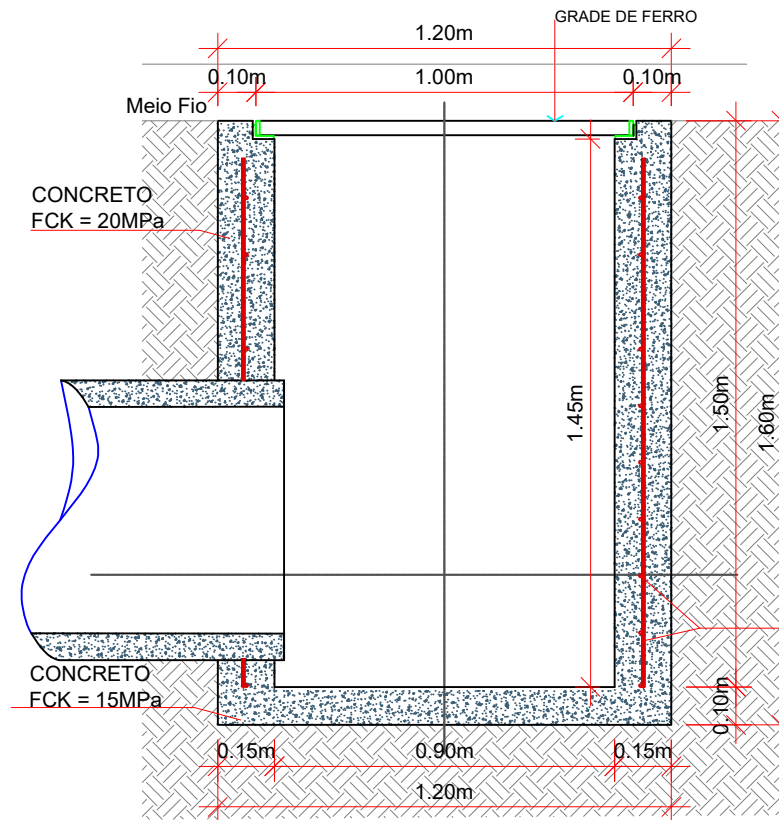


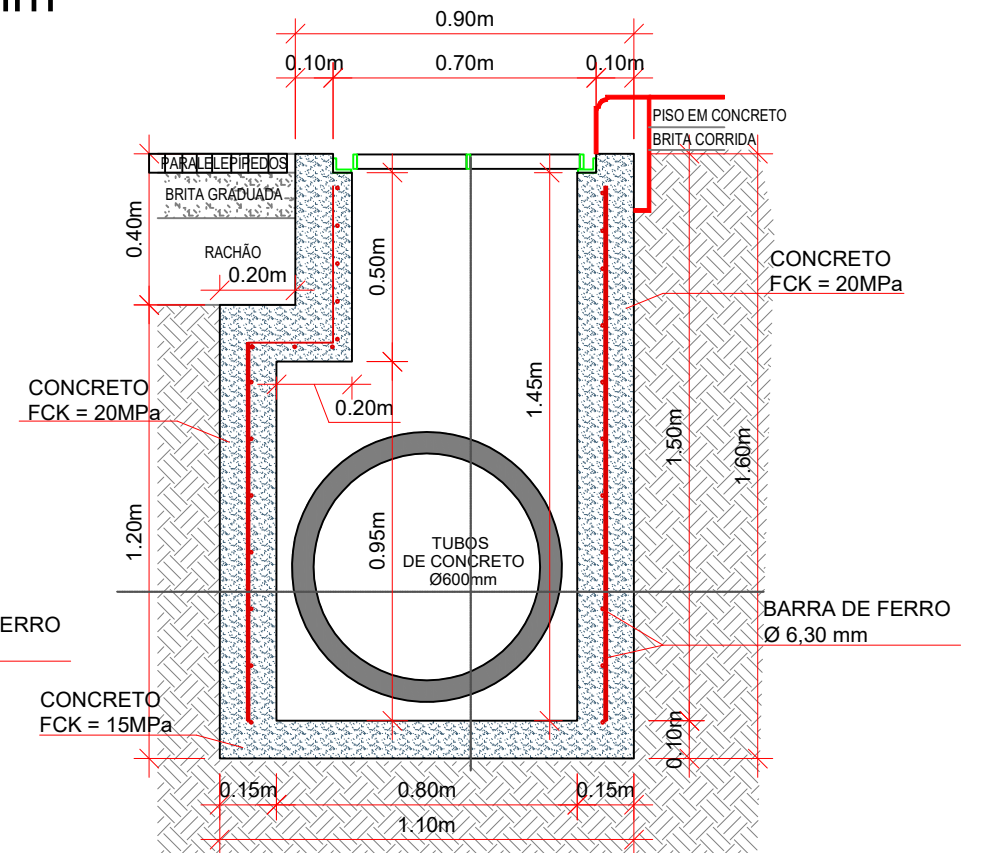
BOCA DE LOBO - TIPO II - Ø600mm



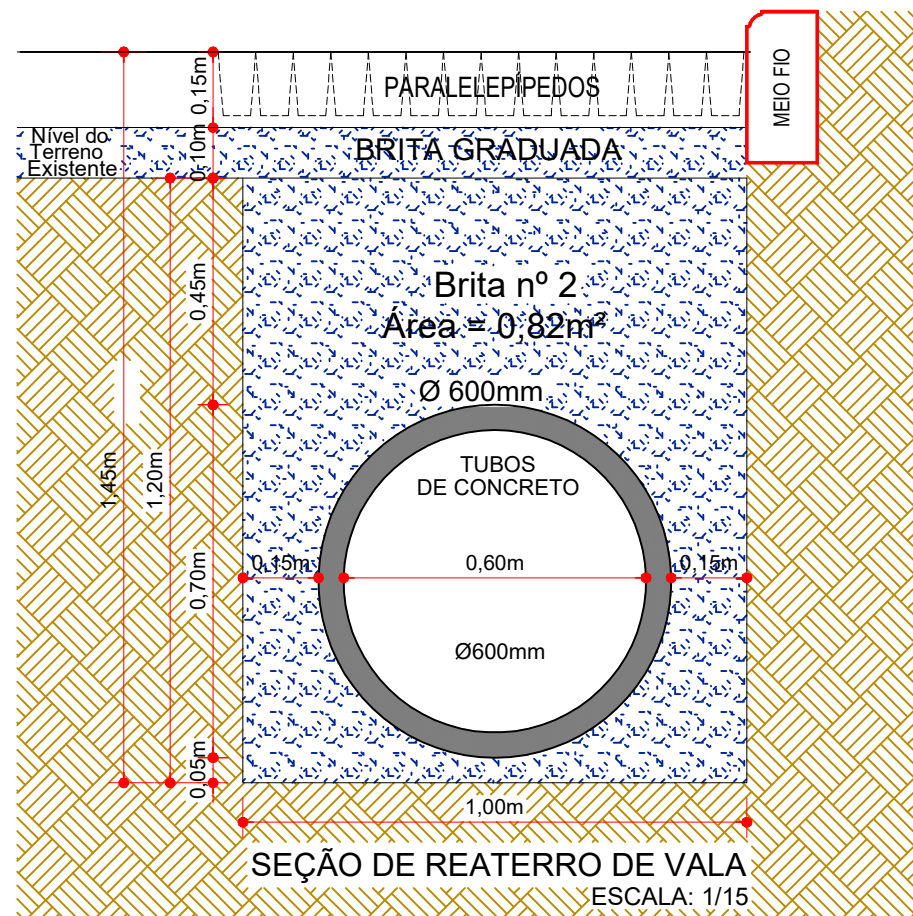
PLANTA BAIXA
Escala 1/20



CORTE AA
Escala 1/20



CORTE BB
Escala 1/20



SEÇÃO DE REATERRO DE VALA
ESCALA: 1/15

ENGENHEIRO RESPONSÁVEL

PREFEITO MUNICIPAL



Projeto: ANA JÚLIA UNGERICH - ENG. CIVIL-CREA/SC 105.295-8
ANDRE BRITO DOTTI - ENG. CIVIL-CREA/SC 162.237-5
DENIR NARCIZO ZULIAN - ENG. CIVIL - CREA/SC 50.805-8
LUCAS FELIPE BALESTRIN - ENG. AGRÔNOMO - CREA/SC 156.743-7
MAX MOOSHAMMER - ENG. CIVIL - CREA/SC 139.164-0

Desenho: EDSON ABATTI

Data: ABRIL DE 2020

Revisão: ABRIL DE 2020

Escala: INDICADA (S)

Projeto: DRENAGEM

Trecho: RUAS LOT. GIASSON

Prancha:

DRE.
03/03