

CADERNO EXECUTIVO

Projeto de interiores
Detalhamentos

✉ thais.barauna@outlook.com

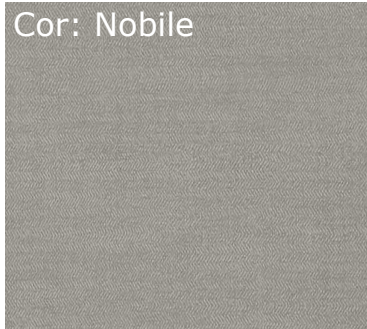
☎ (49) 9 9915-0025

📷 [@thaisbarauna.arq](https://www.instagram.com/thaisbarauna.arq)

THAÍS|
BARAUNA
arquitetura

ESPECIFICAÇÕES GERAIS

Cor: Nobile



Cor: Portoro



Reformas:

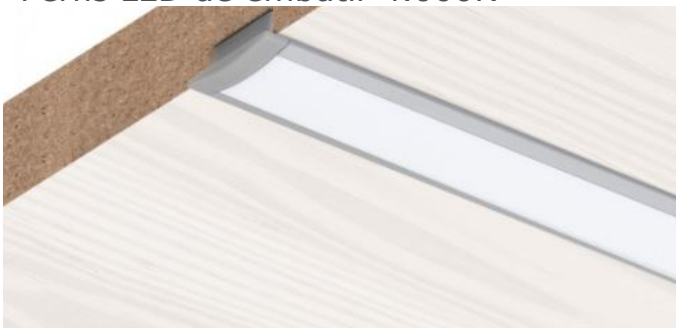
conferir tonalidades
in loco



Cor: Itapuã



Perfis LED de embutir 4.000K

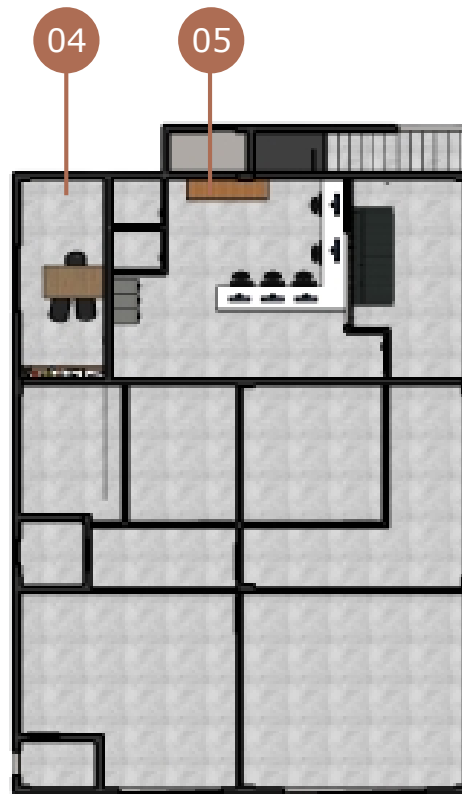


ORIENTAÇÕES GERAIS

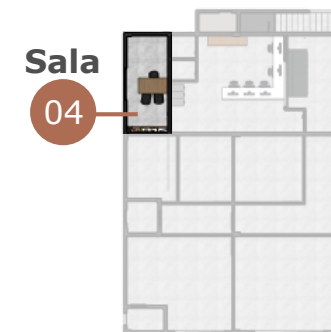
- . Antes do início da execução deverá ser marcada reunião;
- . Todas as medidas devem obrigatoriamente serem conferidas no local antes de qualquer execução;
- . Mobiliário deverá ser produzido em MDF 18 mm;
- . Quando houver puxadores não especificados no mobiliário, os mesmos deverão ser definidos junto ao pessoal terceirizado;
- . Após a realização de cada serviço prestado o responsável deve executar a limpeza do local, no que diz respeito ao seu trabalho;
- . Qualquer dúvida deve ser solucionada com a presença da Arquiteta responsável (antes da execução).

THAÍS|
BARAUNA
arquitetura

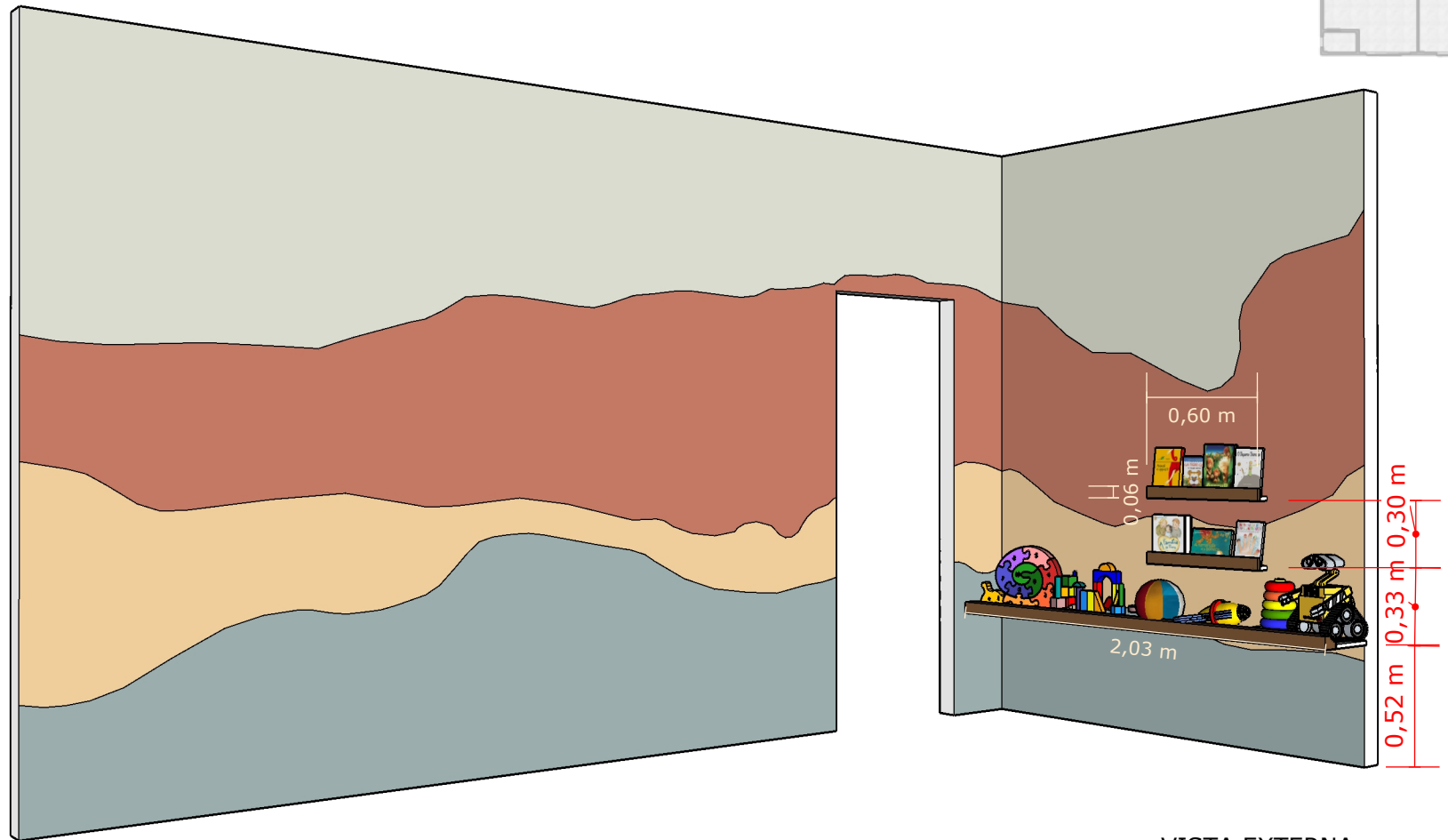
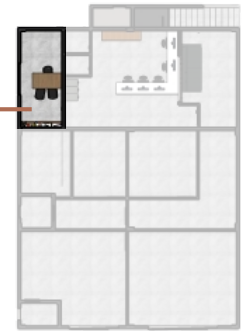
ORDEM DE APRESENTAÇÃO DO CADERNO



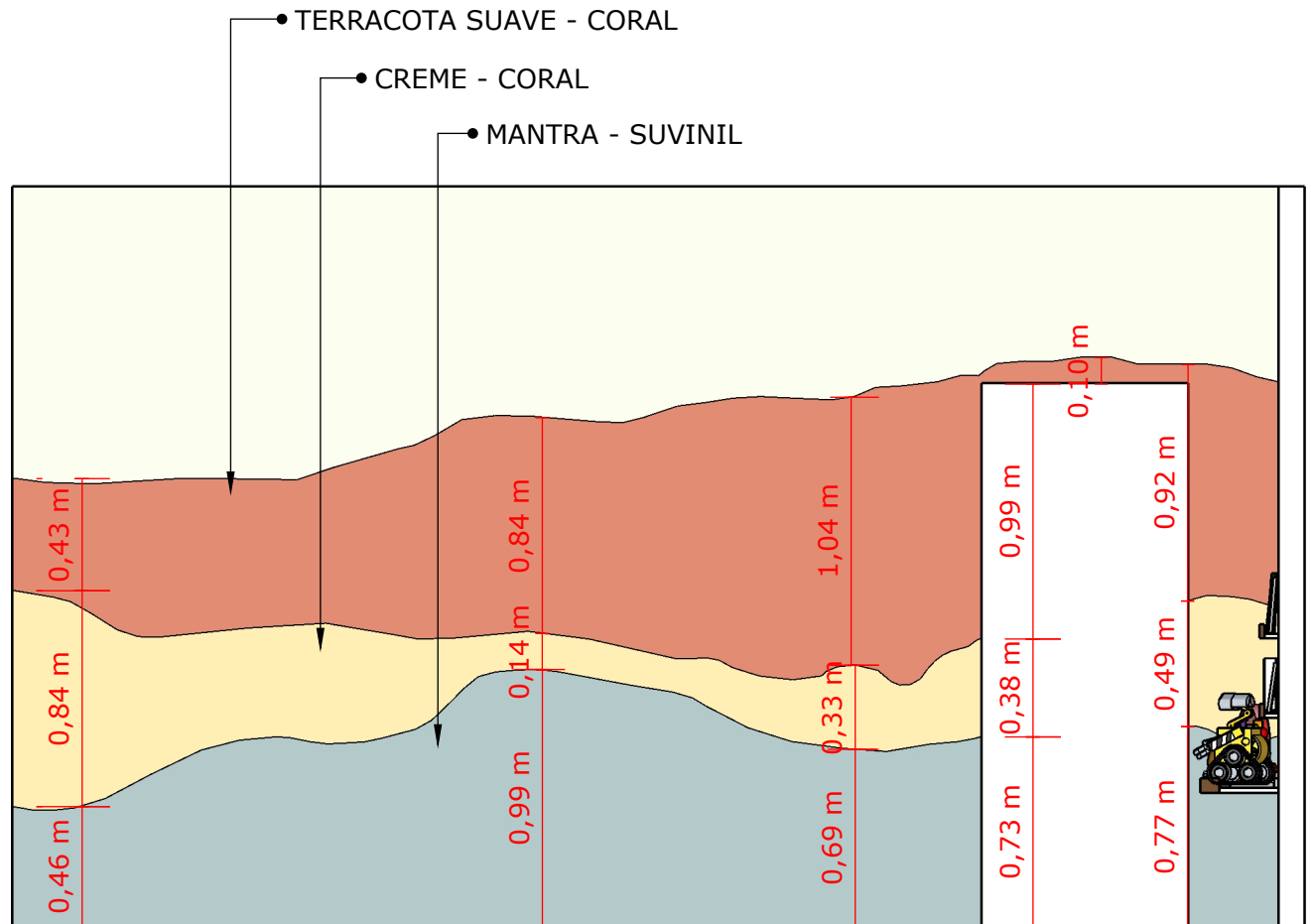
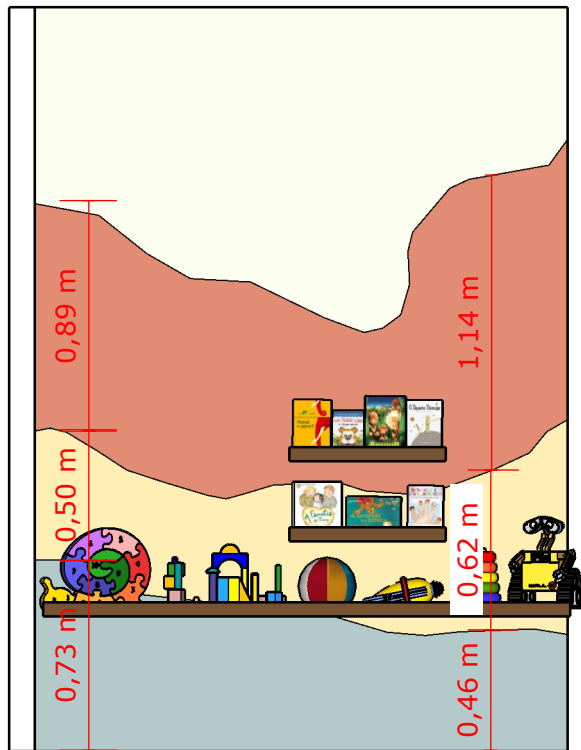
Planta Baixa - Pav Térreo
FUNDOS



Sala 04



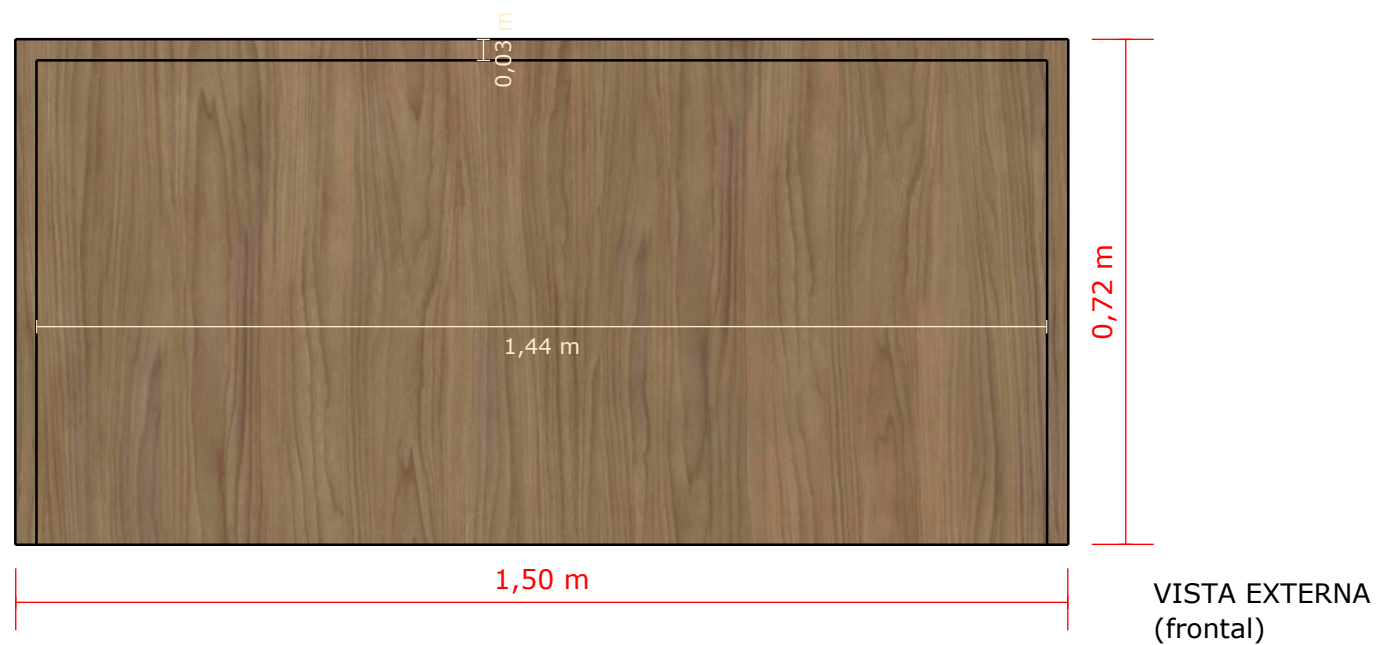
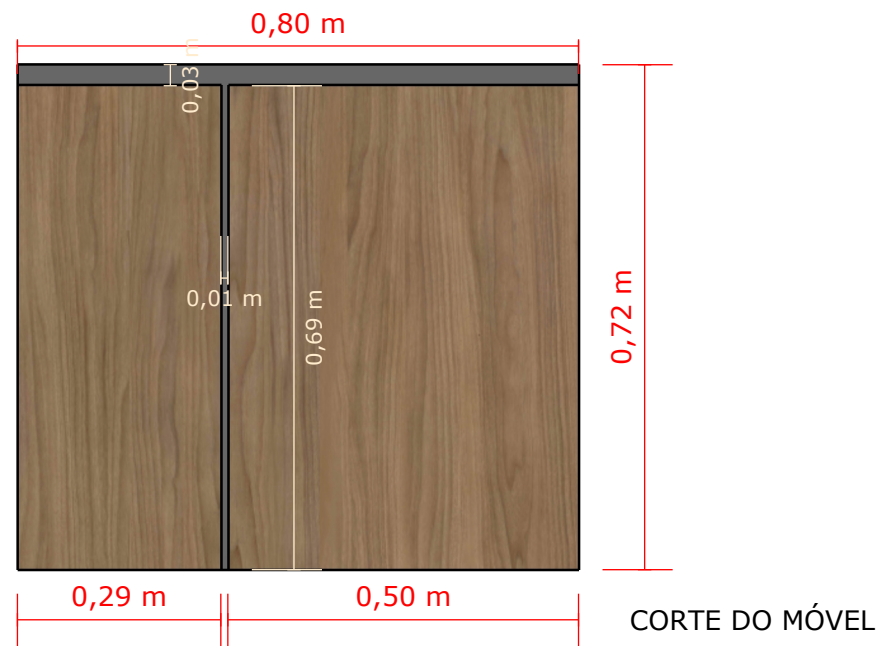
VISTA EXTERNA



VISTA EXTERNA

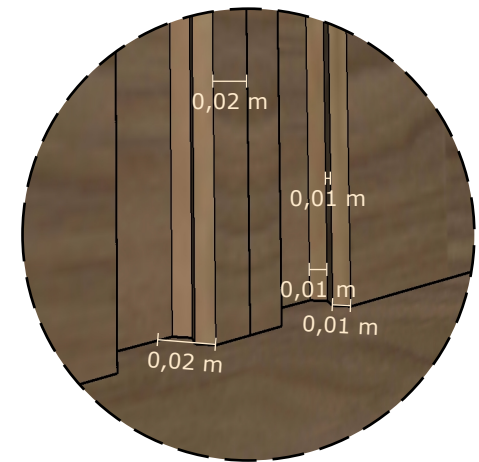


VISTA EXTERNA
(perspectiva)





• Detalhamento puxador cava



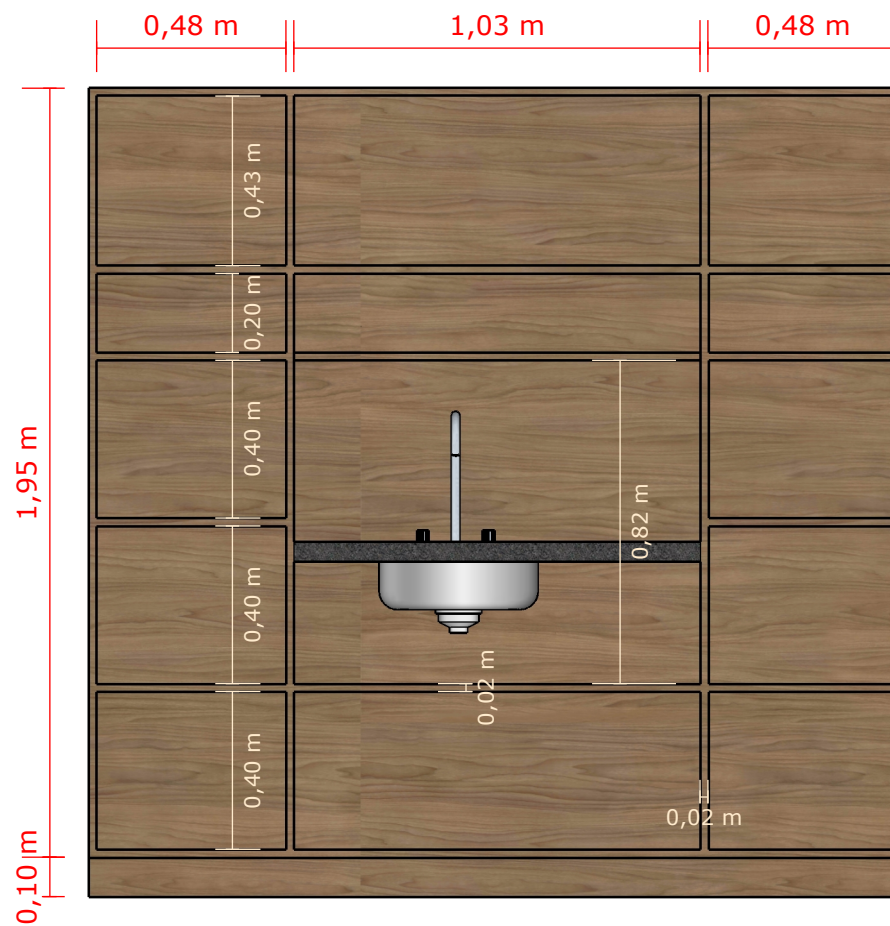
VISTA EXTERNA
(perspectiva)



VISTA EXTERNA
(perspectiva)

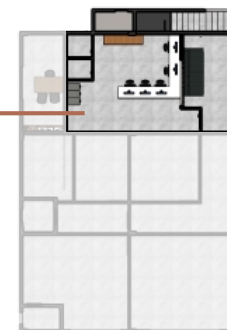


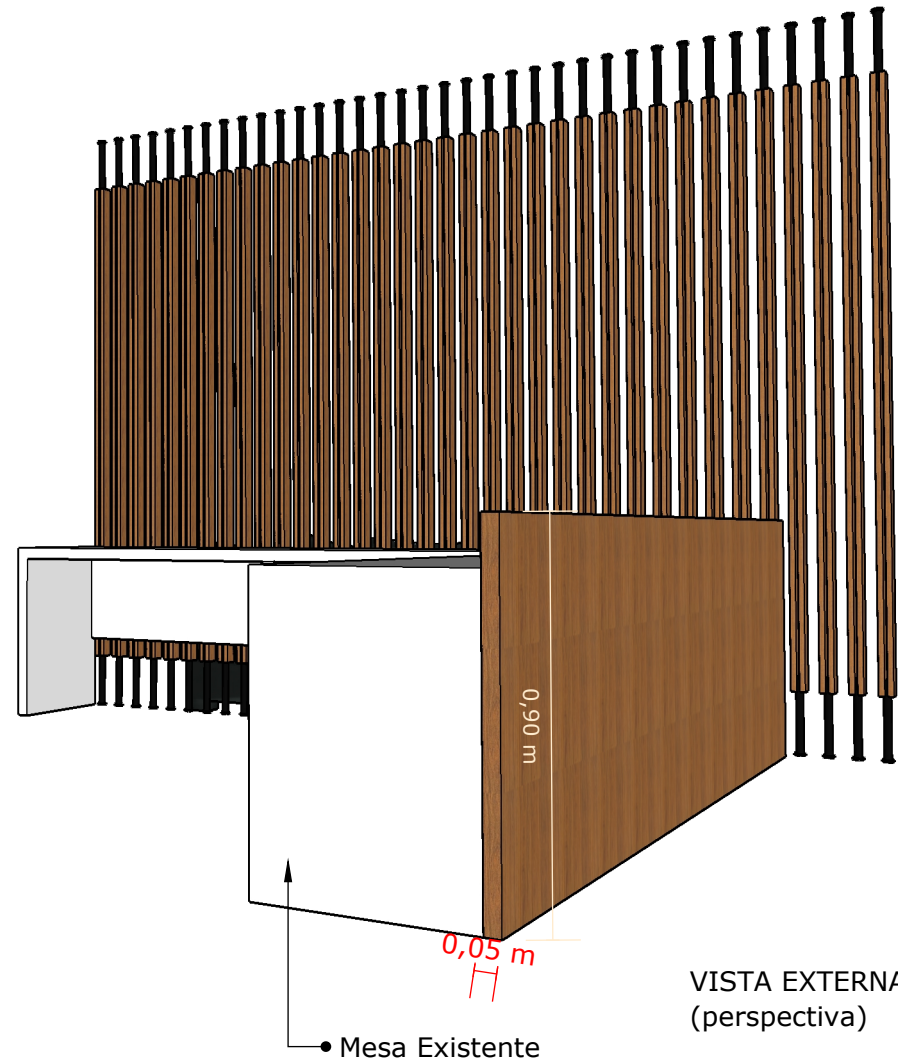
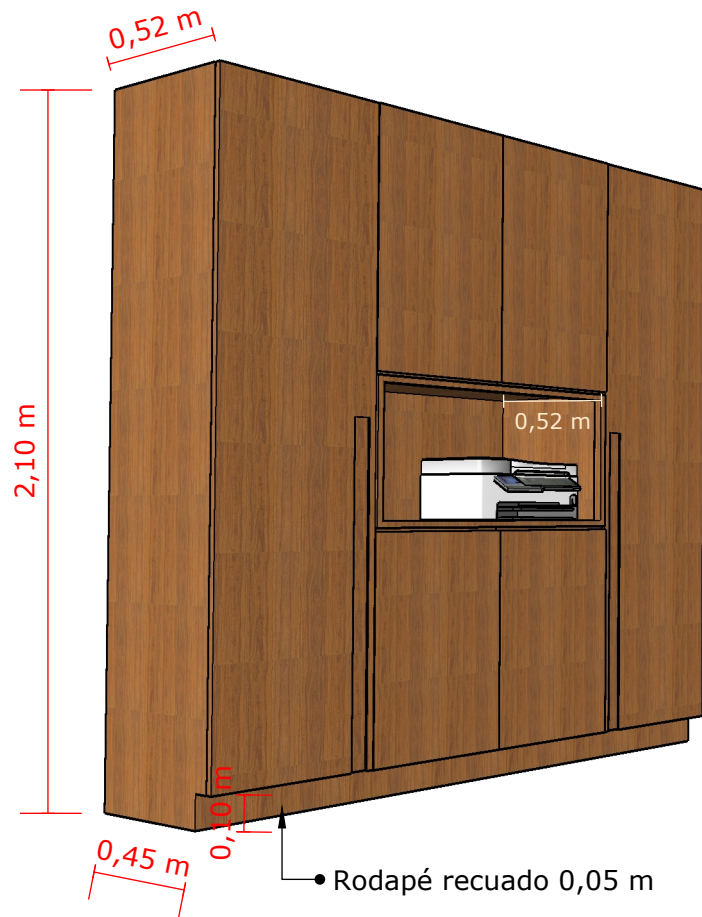
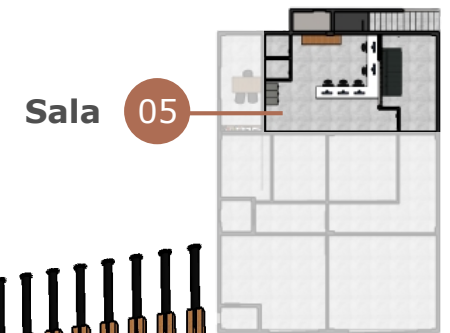
VISTA EXTERNA
(frontal)



VISTA INTERNA
(frontal)

Sala 05

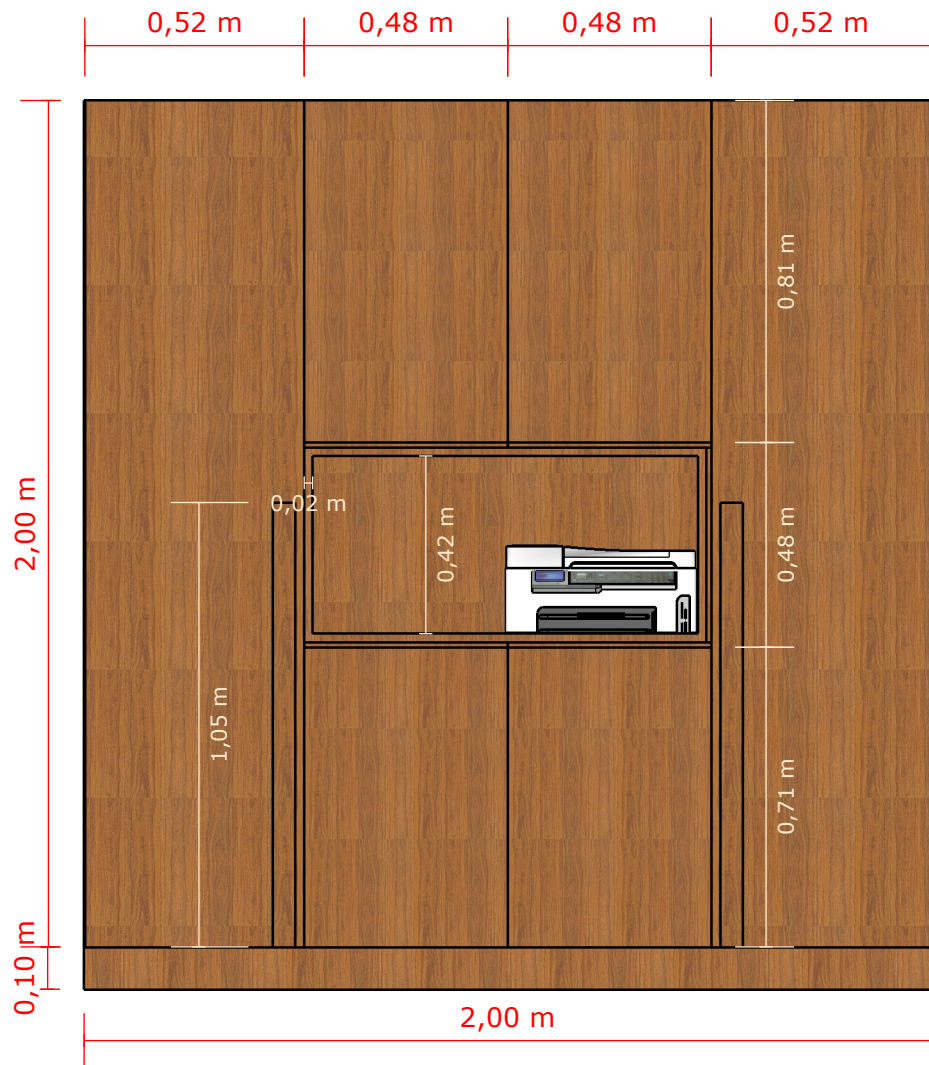




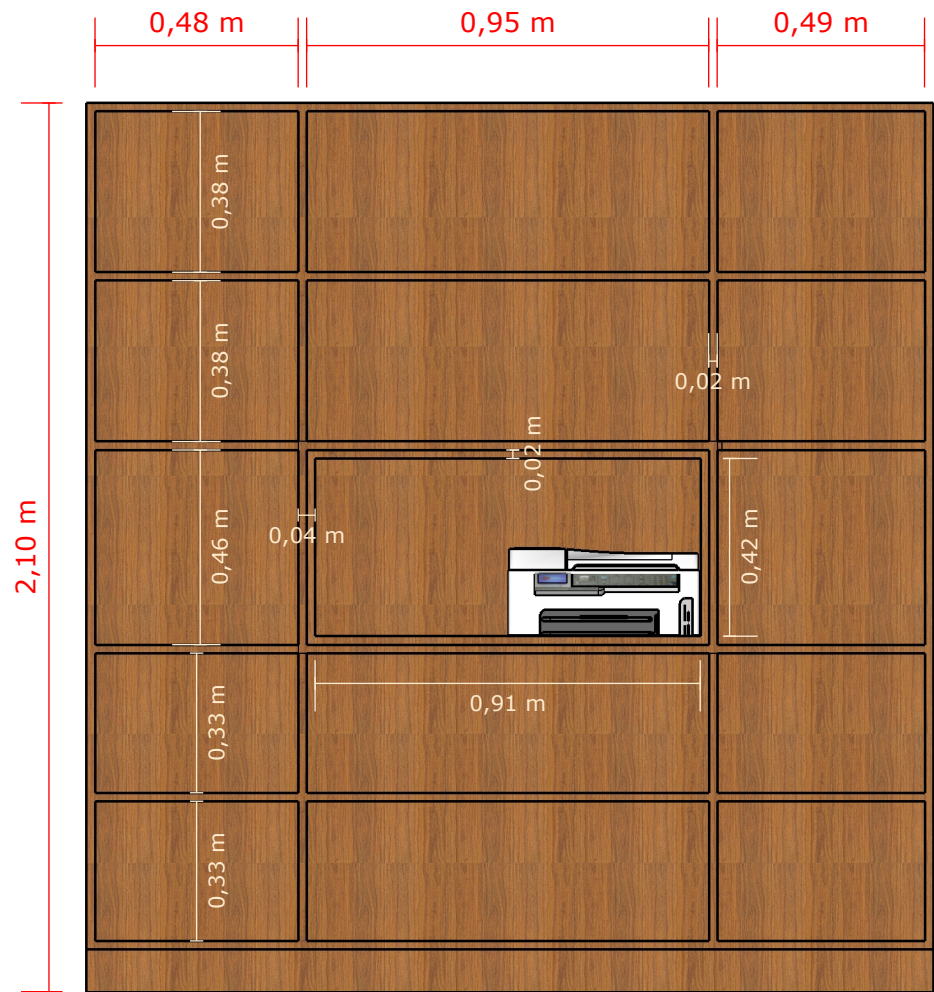
VISTA EXTERNA
(perspectiva)



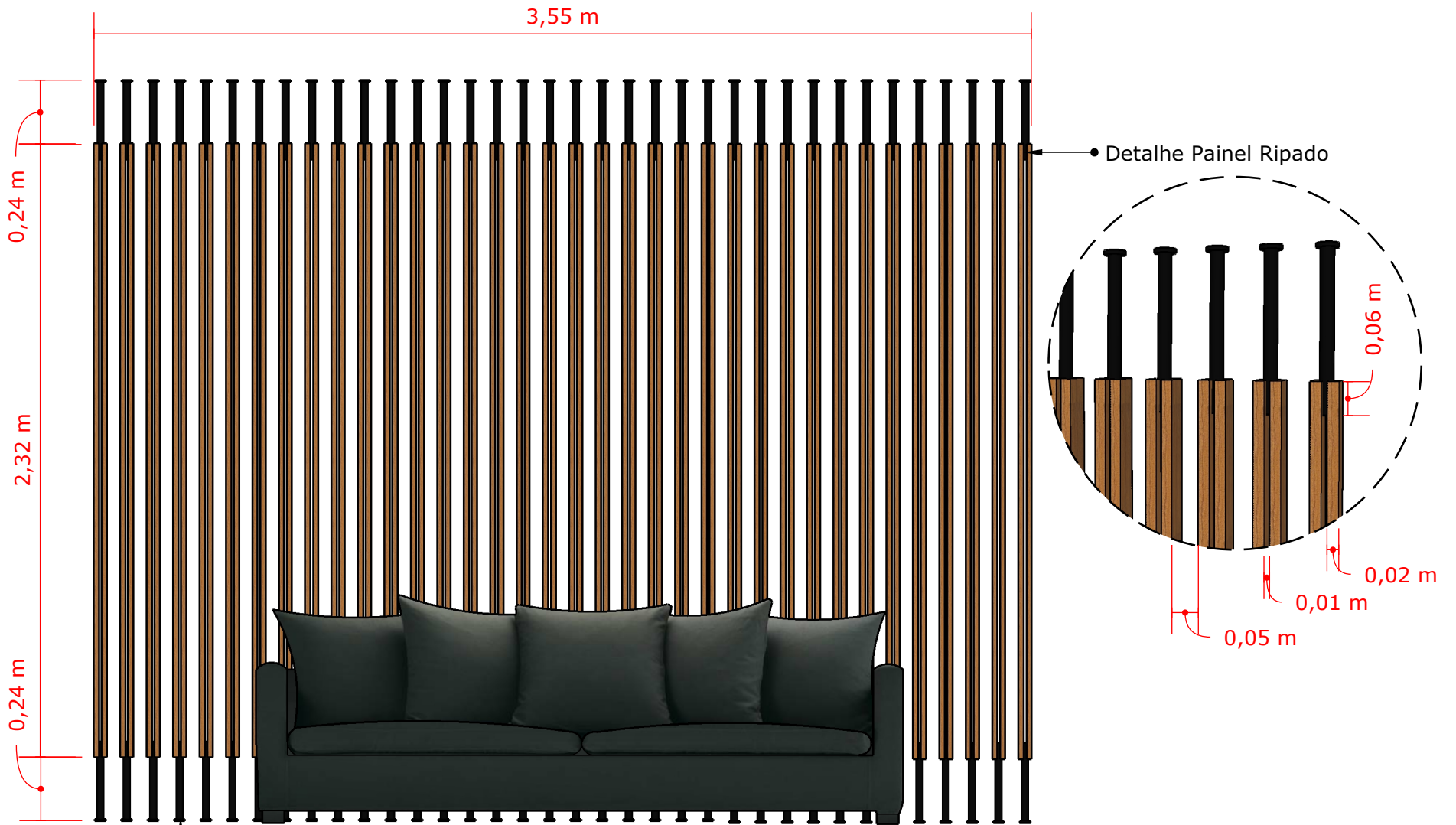
VISTA EXTERNA
(frontal)



VISTA EXTERNA
(frontal)



VISTA INTERNA
(frontal)



• Painel com 72 peças ripadas e 36 suportes em cada extremidade

VISTA EXTERNA (frontal)