

Aprovações:



Rua Roberto Trompowski, 68 - 2º andar / Tel: 49 3522-2800 - www.ammoc.org.br - e-mail: ammoc@ammoc.org.br - Joaçaba/SC

PREFEITURA DE VARGEM BONITA

Obra:

CONSTRUÇÃO DOS BANHEIROS DO CENTRO DE TRADIÇÕES GAÚCHAS

Local da Obra:

ESTRADA MUNICIPAL LINHA CORAÇÃO - VARGEM BONITA - SC

Conteúdo:

DETALHAMENTO DAS FUNDAÇÕES

Responsável Técnico:

Ana Júlia U. de Carvalho - Eng. Civil - Crea/SC 105.295-8
 André Brito Dotti - Eng. Civil - Crea/SC 162.237-5
 Denir Narcizo Zulian - Eng. Civil - Crea/SC 50.805-8
 Fábio Zilio Caron - Eng. Civil - Crea/SC 140.642-7
 Lucas F. Balestrin - Eng. Agrônomo - Crea/SC 156.743-7
 Max Mooshammer - Eng. Civil - Crea/SC 139.164-0
 Suellen Karine Cervelin - Eng. Civil - Crea/SC 166.933-0

EST 02/10

Quaisquer alterações consulte os responsáveis técnicos:

Assinatura Responsável Técnico

Assinatura Prefeito(a) Municipal

Desenho:

Fábio Z. Caron

Data:

Janeiro / 2023

Escala:

Indicada (s)

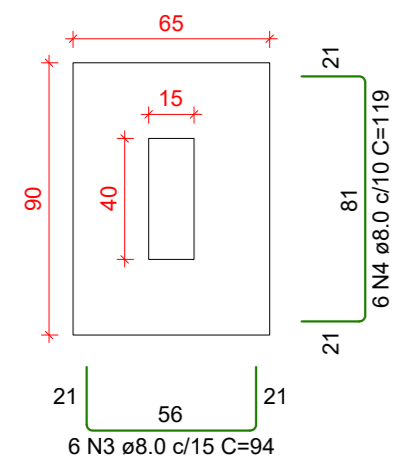
Área Total:

151,90 m²

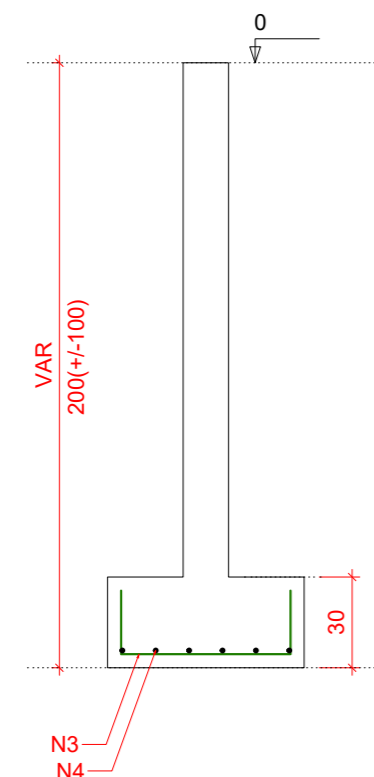
ESTRUTURAL

S1=S3=S4=S5=S6

PLANTA
ESC 1:25

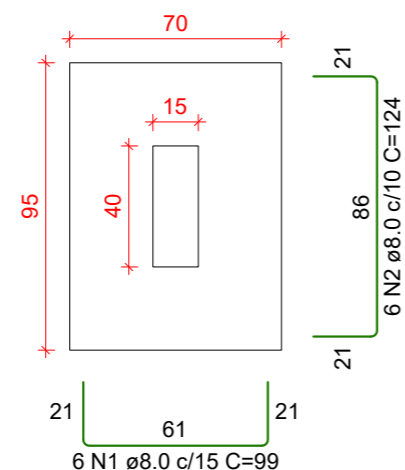


CORTE
ESC 1:25

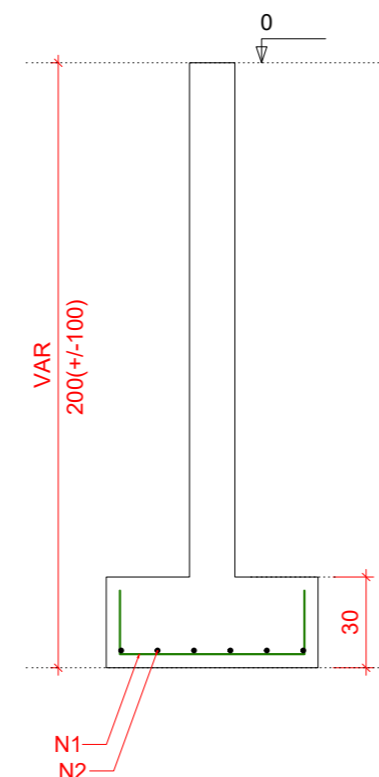


S2

PLANTA
ESC 1:25

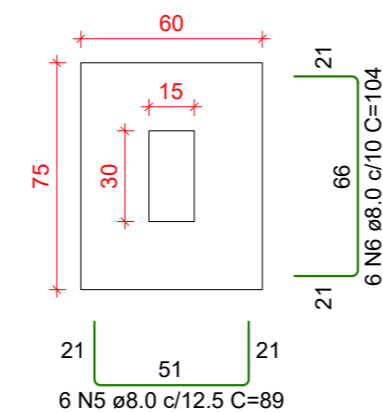


CORTE
ESC 1:25

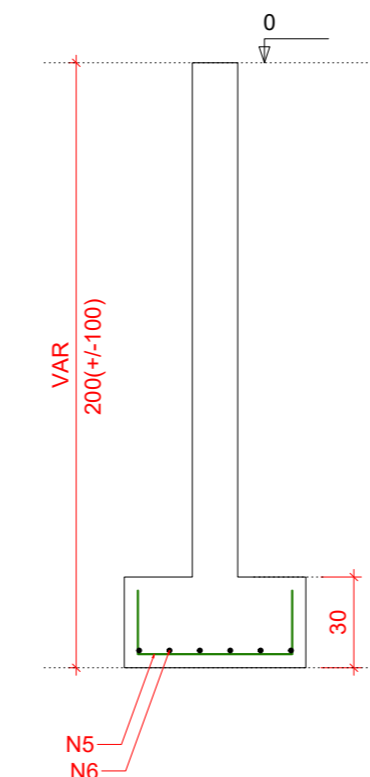


S7=S8=S9=S10=S12

PLANTA
ESC 1:25

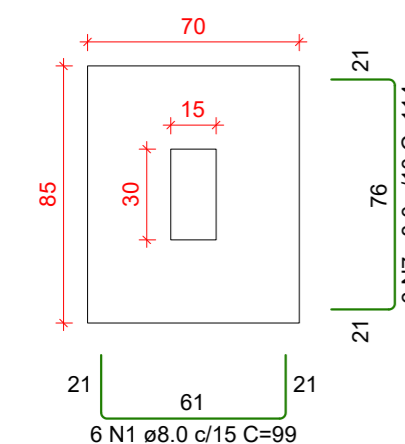


CORTE
ESC 1:25

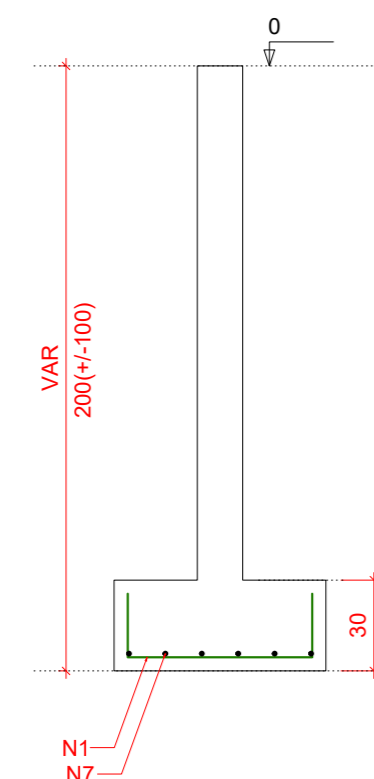


S11

PLANTA
ESC 1:25

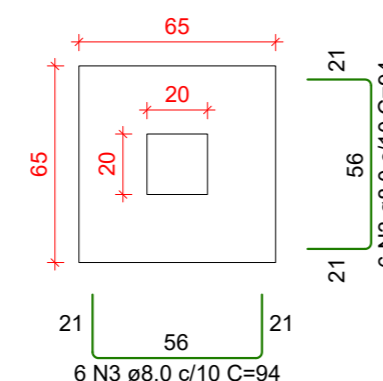


CORTE
ESC 1:25

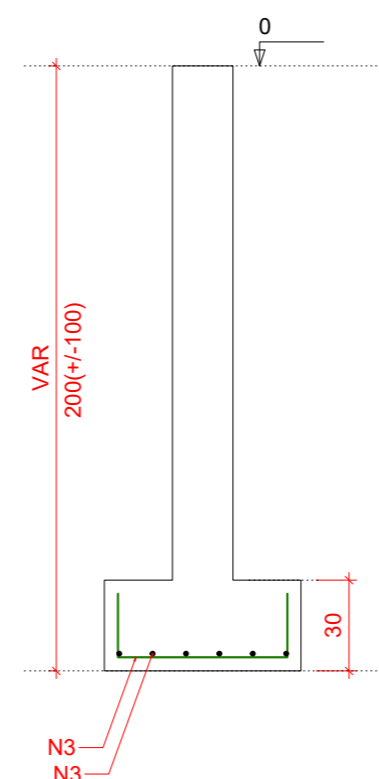


S13=S14=S15

PLANTA
ESC 1:25



CORTE
ESC 1:25



RELAÇÃO DO AÇO

AÇO	N	DIAM (mm)	QUANT	C.UNIT (cm)	C.TOTAL (cm)
CA50	1	8.0	12	99	1188
	2	8.0	6	124	744
	3	8.0	66	94	6204
	4	8.0	30	119	3570
	5	8.0	30	89	2670
	6	8.0	30	104	3120
	7	8.0	6	114	684

RESUMO DO AÇO

AÇO	DIAM (mm)	C.TOTAL (m)	PESO + 0% (kg)
CA50	8.0	181.8	71.7
PESO TOTAL (kg)			
CA50		71.7	

Volume de concreto (C-30) = 2.31 m³

Área de forma = 12.96 m²

Solo com capacidade de suporte > 2.00 kgf/cm²

Solo compactado sobre a sapata

peso específico > 1.70 tf/m³