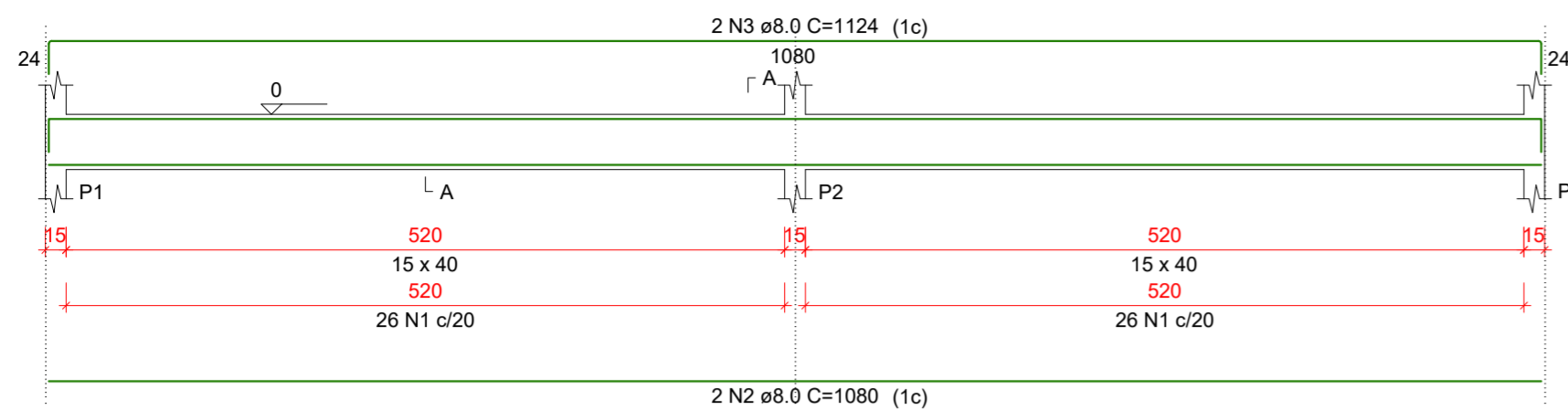
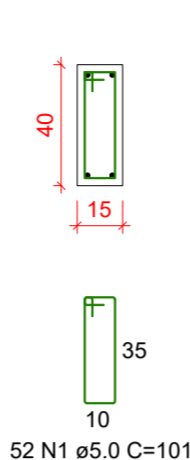


V1
ESC 1:50



SEÇÃO A-A
ESC 1:25



RELAÇÃO DO AÇO

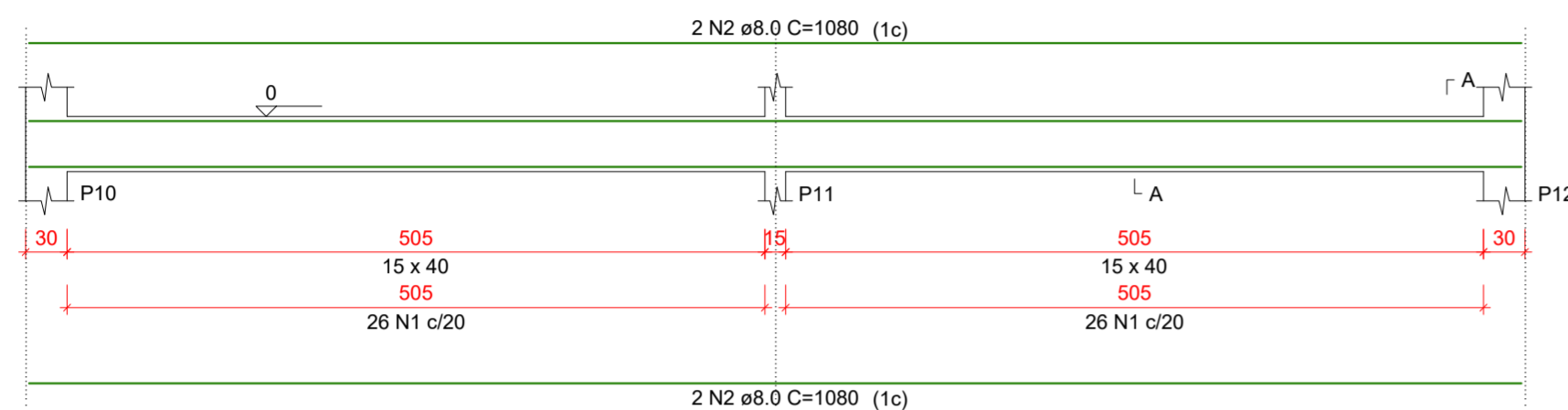
AÇO	N	DIAM (mm)	QUANT	C.UNIT (cm)	C.TOTAL (cm)
CA60	1	5.0	348	101	35148
CA50	2	8.0	8	1080	8640
	3	8.0	2	1124	2248
	4	8.0	2	1096	2192
	5	8.0	6	918	5508
	6	8.0	6	458	2748
	7	8.0	6	1198	7188
	8	8.0	2	253	506
	9	8.0	2	254	508
	10	8.0	2	256	512

RESUMO DO AÇO

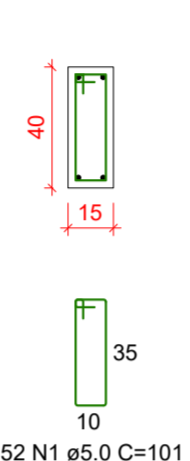
AÇO	DIAM (mm)	C.TOTAL (m)	PESO + 0% (kg)
CA50	8.0	300.5	118.6
CA60	5.0	351.5	54.2
PESO TOTAL (kg)			
CA50	118.6		
CA60	54.2		

Volume de concreto (C-30) = 4.09 m³
Área de forma = 53.95 m²

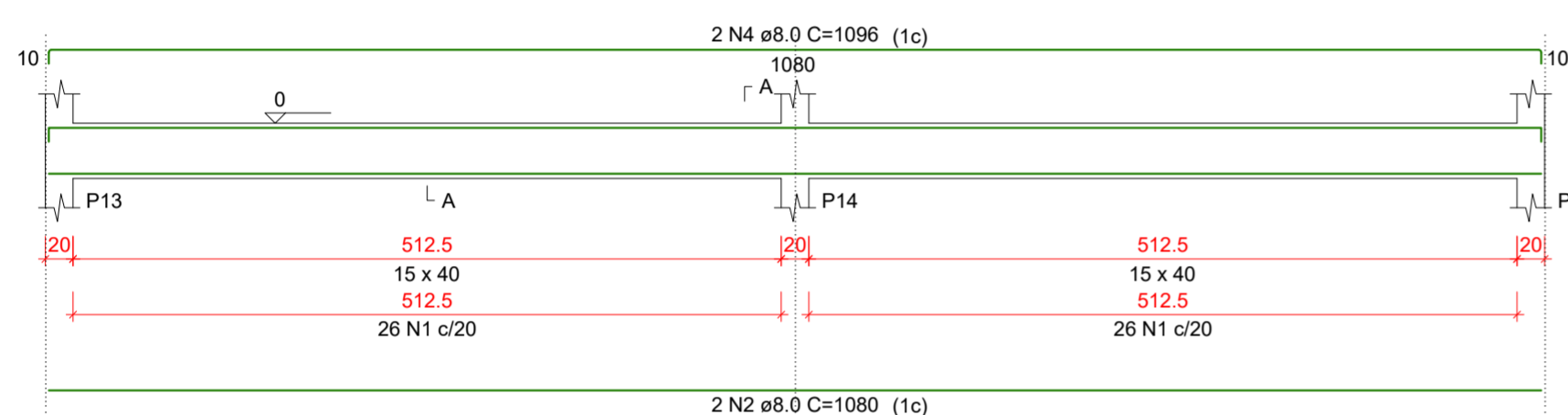
V2
ESC 1:50



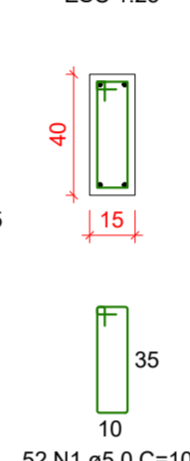
SEÇÃO A-A
ESC 1:25



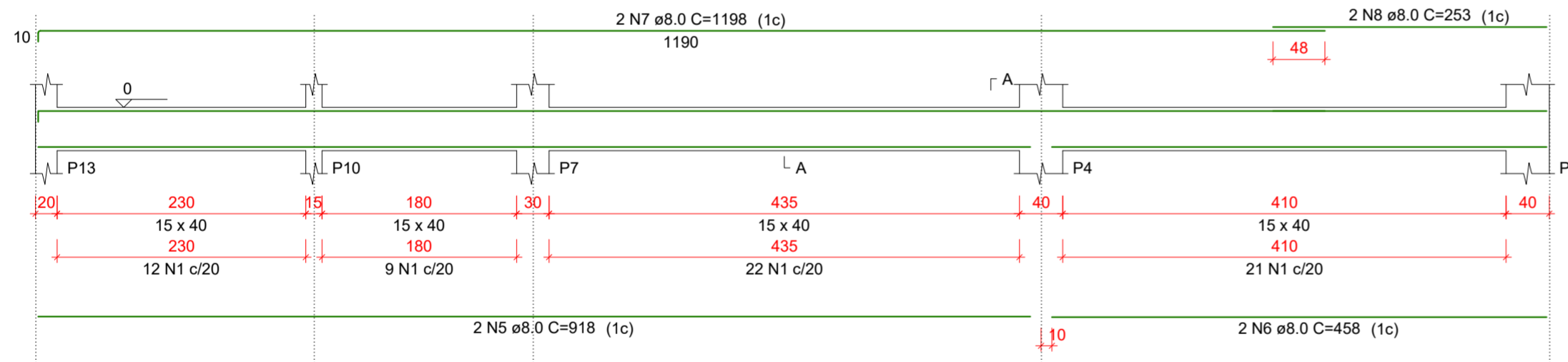
V3
ESC 1:50



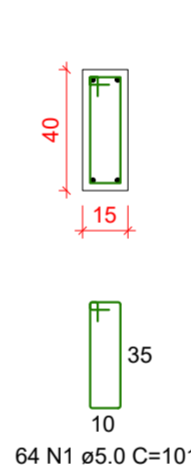
SEÇÃO A-A
ESC 1:25



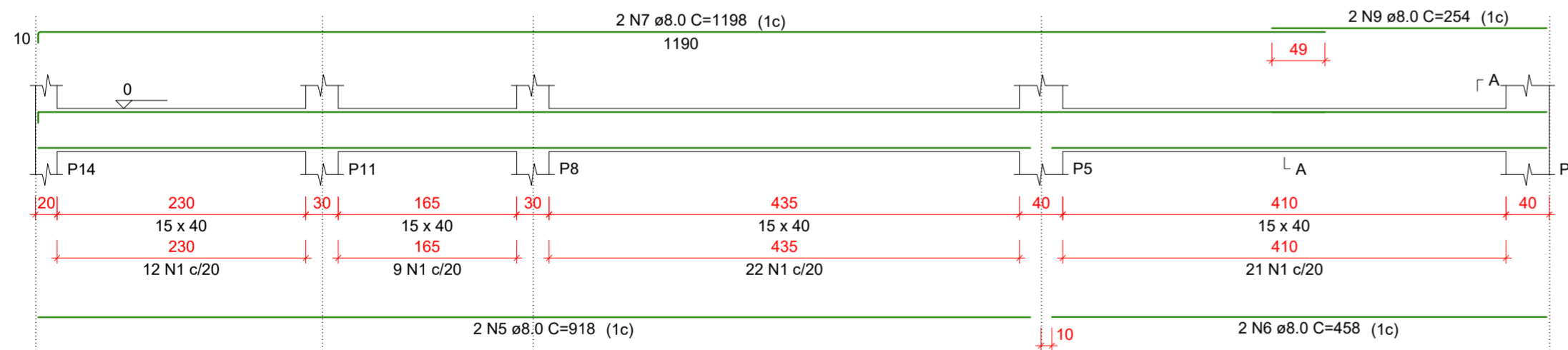
V4
ESC 1:50



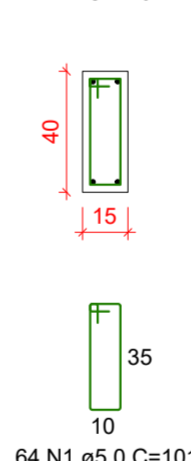
SEÇÃO A-A
ESC 1:25



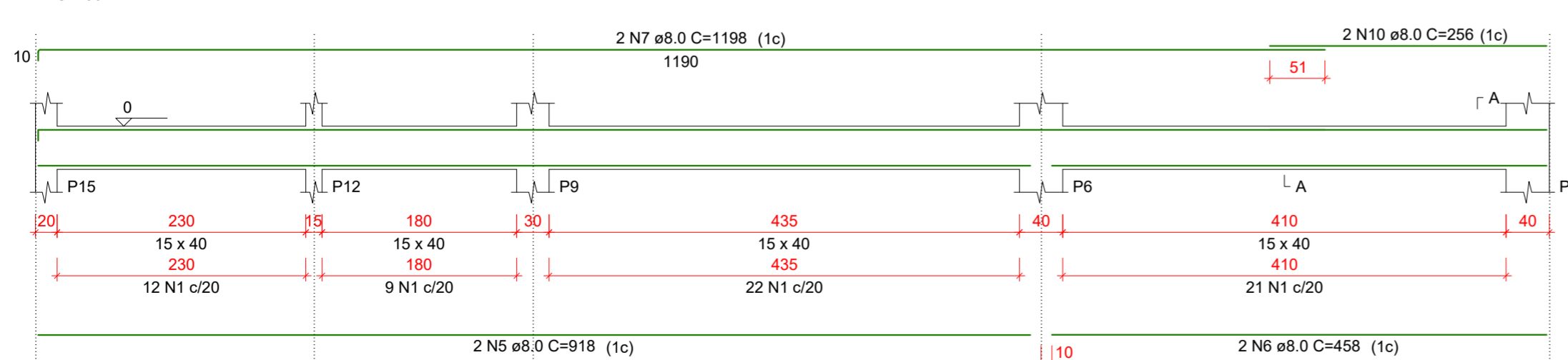
V5
ESC 1:50



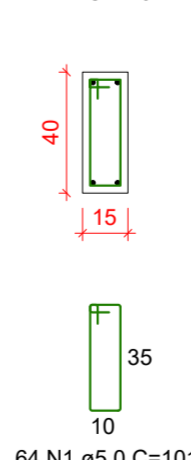
SEÇÃO A-A
ESC 1:25



V6
ESC 1:50



SEÇÃO A-A
ESC 1:25



Aprovações:



Rua Roberto Trompowski, 68 - 2º andar / Tel: 49 3522-2800 - www.ammoc.org.br - e-mail: ammoc@ammoc.org.br - Joaçaba/SC

PREFEITURA DE VARGEM BONITA

Obra:

CONSTRUÇÃO DOS BANHEIROS DO CENTRO DE TRADIÇÕES GAÚCHAS

Local da Obra:

ESTRADA MUNICIPAL LINHA CORAÇÃO - VARGEM BONITA - SC

Conteúdo:

DETALHAMENTO DAS VIGAS DE BALDRAME

Responsável Técnico:

Ana Júlia U. de Carvalho - Eng. Civil - Crea/SC 105.295-8
André Brito Dotti - Eng. Civil - Crea/SC 162.237-5
Denir Narcizo Zulian - Eng. Civil - Crea/SC 50.805-8
Fábio Zilio Caron - Eng. Civil - Crea/SC 140.642-7
Lucas F. Balestrin - Eng. Agrônomo - Crea/SC 156.743-7
Max Mooshammer - Eng. Civil - Crea/SC 139.164-0
Suellen Karine Cervelin - Eng. Civil - Crea/SC 166.933-0

EST
05/10

Quaisquer alterações consulte os responsáveis técnicos:

Assinatura Responsável Técnico

Assinatura Prefeito(a) Municipal

Desenho:

Fábio Z. Caron

Data:

Janeiro / 2023

Escala:

Indicada (s)

Área Total:

151,90 m²

ESTRUTURAL